

# Nu Genius

## GEL IMAGING AT A TOUCH



 **JH BIO**  
INNOVATIONS FOR EXCELLENCE

**S Y N G E N E**  
A DIVISION OF THE SYNOPTICS GROUP

# NUGENIUS

**NuGenius** is a new generation, low cost, integrated system for DNA and protein analysis and gel documentation. Continuing the “Genius” range, the **NuGenius** features an integrated 7 inch touch screen and a built in processor running our new dedicated **NuGenius** software for image capture and editing.

A new ground breaking 5m pixel CCD camera gives exquisite pixel resolution and unrivalled sensitivity in its class. **NuGenius** uses an f/1.2 motor driven zoom lens to enable perfect imaging of any gel or blot size. The maximum viewing area is 20 x 24cm which is very large for such a small, compact unit.

Internal lighting includes a UV transilluminator option for working with DNA gels. Our new UV-Blue light converter screen allows imaging of all Safe dyes. A visible light converter option can quickly extend its use for working with visible gels and blots. Overhead LED white lighting is included as standard for easy sample positioning and focusing.

**NuGenius** is compatible with ‘safe dyes’ such as SYBR® Gold, SYBR® Safe, GelGreen™ and many more as well as with visible light applications such as Coomassie blue and silver stain gels. **NuGenius+** has been designed for stain free applications. It has a modified camera enabling the user to expose for longer periods of time.

Images are saved direct to USB memory stick for easy transfer to a PC or laptop.

Quickly generate quantitative data with GeneTools analysis software. 4 copies are included as standard. Extra copies can be requested at no extra charge.





### Features

Compact darkroom with hinged door  
5 million pixel camera  
Motor driven optics  
Can use a range of lighting  
UV-visible light converter screen and  
UV-blue light converter screen option  
Touch screen  
Image enhancements and annotations  
GeneTools analysis software

### Benefits

Small footprint taking up minimal laboratory bench space  
Exceptional resolution for high quality images  
Ease of control  
Versatile - white light, blue light, UV  
Easy and safe imaging of DNA and protein gels  
Full intuitive touch control of all functions  
Total control over image quality  
Saves time by automating analysis of gels, colony plates and blots

# NUGENIUS



## Camera

Superb 5 million pixel resolution



## Lens

f/1.2 motor driven zoom lens



## Integral computer

Raspberry Pi



## Touch screen

7"



## Internal lighting

Internal LED white light  
for ease of sample  
positioning



## Hinged door

Easy access to darkroom



## Safety switch

Override UV protects from  
accidental UV exposure  
when opening door

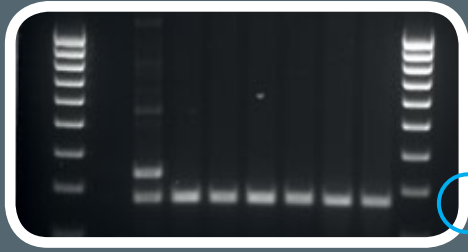


## Transilluminator (optional)

- UV transilluminator, slides in and out, Auto UV shut off
- UV-blue light converter screen
- UV-visible light converter screen

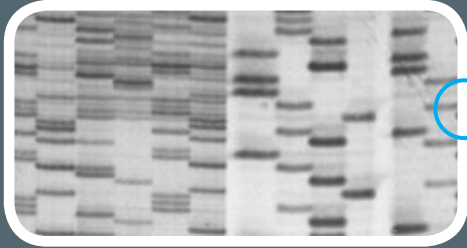


# NUGENIUS APPLICATIONS



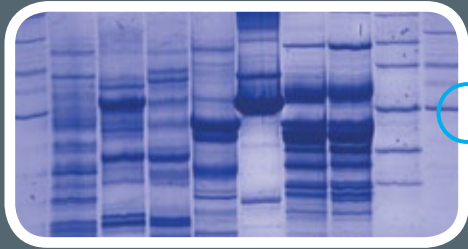
## DNA

With a **NuGenius** you can use the UV transilluminator to capture images of DNA gels stained with Ethidium Bromide



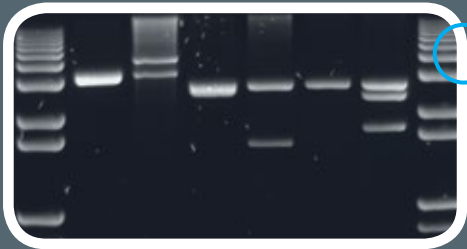
## AutoRads

The **NuGenius** features a 5 million pixel resolution camera ideal for capturing images requiring high detail. This is especially true when looking for separation between bands and spots. Capturing high quality images of Autorads is one of the strengths of the **NuGenius**



## Visible light

With the visible light converter, **NuGenius** can be used to view gels which have been stained with, eg, silver stain and Coomassie blue. You can also view tissues, slides and films



## Blue light

A blue light conversion screen is available for applications requiring blue light excitation, eg, "Safe" dyes such as GFP, SYBR®Green, SYBR Gold, SYBR Safe, SYPRO Ruby, Safe View and Flamingo



## Stain free (with NuGenius+)

Stain free technology removes extra steps and long delays from staining with dyes such as Coomassie blue. **NuGenius+** is capable of capturing stain free images automatically



These are just some of the applications that can be used with **NuGenius/NuGenius+**. The Syngene Applications and Support Department is always ready to discuss your particular application needs and how they can be imaged using **NuGenius/NuGenius+**.

Please contact [applications@syngene.com](mailto:applications@syngene.com)

## Specification

	<b>NuGenius</b>	<b>NuGenius+</b>
<b>Camera</b>	<b>5 million pixel</b>	<b>5 million pixel</b>
Sensor	1/2.5 inch	2/3 inch
Bit depth	12/16 bit	12/16 bit
Greyscale	0-65,536	0-65,536
Dynamic range	3.6/4.8 (extended)	3.6/4.8 (extended)
Lens	8 - 48mm f/1.2	11.5 - 69mm f/1.4
Viewing area	20 x 24cm	20 x 24cm
<b>Illumination</b>		
Slim transilluminator 20 x 24cm	Option	Option
Blue converter screen 21 x 26cm	Option	Option
Visible light converter	Option	Option
White epi	Yes	Yes
<b>7 inch touch screen</b>		
<b>Software</b>		
Image capture	Yes	Yes
GeneTools analysis	Yes	Yes
GeneDirectory	Option	Option
<b>Printer</b>		
	P95DW Mitsubishi digital thermal printer	P95DW Mitsubishi digital thermal printer
	Canon Selphy CP1200	Canon Selphy CP1200
Paper and ink	K65HM thermal paper, matt	K65HM thermal paper, matt
	K91HG thermal paper, glossy	K91HG thermal paper, glossy
	Canon KP-108IN	Canon KP-108IN
<b>Dimensions</b>		
H x W x D cms	75 x 31 x 45	75 x 31 x 45
Weight	20kg	20kg

Over 75,000 scientists world-wide in pharmaceutical and biotech companies, as well as academic and government institutions, have chosen Syngene as their expert imaging partner. If you'd like to find out why, please contact us or one of our distributors for more information and a demonstration of the revolutionary **NuGenius**.



INNOVATIONS FOR EXCELLENCE

**JH BIO Innovations Pvt. Ltd.**

# 145, AECS Layout, 1st Stage, Sanjay Nagar,  
Bangalore - 94. India.

Ph: 080 - 23418944/45/46 Fax: 080- 23418947

E-Mail: [info@jhindia.com](mailto:info@jhindia.com) Web: [www.jhindia.com](http://www.jhindia.com)

**Please refer to [www.syngene.com](http://www.syngene.com) for all ordering information**

**Syngene Europe and International Headquarters:**

Beacon House Nuffield Road Cambridge CB4 1TF UK

Tel: +44 (0)1223 727123 Fax: +44 (0)1223 727101 email: [sales@syngene.com](mailto:sales@syngene.com)

**Syngene USA Headquarters:**

5103 Pegasus Court Suite L Frederick MD 21704 USA

Tel: 800-686-4407/301-662-2863 Fax: 301-631-3977 email: [ussales@syngene.com](mailto:ussales@syngene.com)

**Website: [www.syngene.com](http://www.syngene.com)**